

## Mod. 7630.B.15U

### WATERPROOF RACK CASE

15U (units) rack-size waterproof case with wheels and trolley handle.

This model is provided with an internal alu racking frame that can be pulled out by mean of the practical handles, for cabling or stand-alone use.

Lids can be left in position or completely removed for an easier use on location.

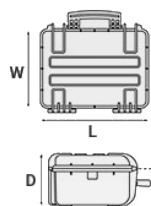
The provided M6 Cage Nuts and screws grants practical mounting of any device.

RACK LENGTH: 220 mm

LID DEPTH: 65 mm



METRIC MM-KG-C°



#### INTERNAL DIMENSIONS

<b>L</b> LENGTH	765 mm
<b>W</b> WIDTH	485 mm
<b>D</b> DEPTH	305 mm
<b>LID</b>	60 mm
<b>BASE</b>	245 mm

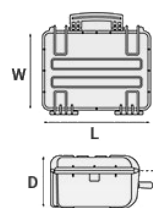
#### EXTERNAL DIMENSIONS

<b>L</b> LENGTH	860 mm
<b>W</b> WIDTH	560 mm
<b>D</b> DEPTH	355 mm

#### OTHER DATA

<b>WEIGHT EMPTY</b>	16.6 Kg
<b>WEIGHT WITH FOAM</b>	Kg
<b>WEIGHT WITH CUSTOM FOAM</b>	Kg
<b>VOLUME</b>	113.1 lt
<b>BUOYANCY</b>	81.8 Kg/max
<b>OPERATING TEMPERATURE</b>	°C min -33 / max 90

IMPERIAL IN-LBS-F°



#### INTERNAL DIMENSIONS

<b>L</b> LENGTH	30 1/8 in
<b>W</b> WIDTH	19 1/8 in
<b>D</b> DEPTH	12 in
<b>LID</b>	2 3/8 in
<b>BASE</b>	9 5/8 in

#### EXTERNAL DIMENSIONS

<b>L</b> LENGTH	33 7/8 in
<b>W</b> WIDTH	22 1/16 in
<b>D</b> DEPTH	14 in

#### OTHER DATA

<b>WEIGHT EMPTY</b>	36.59 lbs
<b>WEIGHT WITH FOAM</b>	lbs
<b>WEIGHT WITH CUSTOM</b>	lbs
<b>FOAM</b>	
<b>VOLUME</b>	29.85 gal
<b>BUOYANCY</b>	180.33 lbs/max
<b>OPERATING</b>	°F min -27.4 / max
<b>TEMPERATURE</b>	194

## FEATURES



**SELF OILING FREE RUNNING WHEELS**



**CORROSION PROOF METAL HINGES WITH LID STAY FEATURES**



**INTERNAL SLOTS**

Internal slots for optional panel mounting brackets or panel mounting rings



**LARGE FRONT HANDLE**



### JAM FREE LATCHES WITH EASY-OPENING MECHANISM

(from model 3818 on)



### SEALING O-RING

(Art. NEOSEAL + nr. art.)



### MANUAL PRESSURE RELEASE VALVE

The internal stop ring prevents valve from being completely extracted (Art. PURGEVALVE.B)



### PVC WATERPROOF I. D. REMOVABLE LABEL

(Art. LABELCOVER + nr. art.)

**RETRACTABLE HANDLE**



**TWO MAN LIFT SIDE HANDLES**



## ACCESSORIES



### PROTECTIVE SLEEVE FOR PC 15"-15.6"

TOP ENVELOPE 15

Protective padded notebook sleeve. Protects the laptop from shocks and scratches.



### PROTECTIVE SLEEVE FOR PC 13"-13.3"

TOP ENVELOPE 13

Protective padded notebook sleeve. Protects the laptop from shocks and scratches.



### PADDED GUN BAG FOR CASES 7630-7641 AND 7814

GBAG 76

Padded gunbag to protect SMG guns. Inclusive of a number of features to secure rifles and shotguns together with necessary accessories and ammunitions. GBAG 76 is designed to perfectly fit into Explorer Cases models 7630 (up to 6 pieces) 7641 (up to 8 pieces) and 7814 (1 piece). The gunbag is built with durable, 600D tear resistant polyester and robust zipper with lockable Velcro pull zipper. Designed to protect and transport critical gear. This gun bag comes with a removable shoulder strap. Personal ID window on the backside and front removable hook-and-loop screen-printable band.



### TOP COVER FOR DIV4820-DIV7630 AND DIV7641

COV48-76

Top covers available for larger models: they can be easily fixed on the dividers by Velcro strips. Ideal to protect and keep items in place.



### **PADDED DIVIDER FOR 7630**

DIV7630

Padded dividers with internal adjustable partitions. Ideal to protect and transport any kind of sensitive equipment. Thanks to their modularity, they can be easily combined.



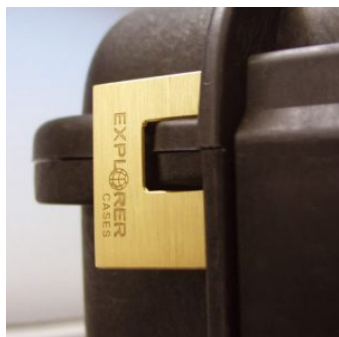
FIXING  
KIT  
INCLUDED

### **LID PANEL WITH ORGANIZED POUCHES**

PANEXPL76

Practical and robust lid panel with pouches, ideal for small accessories and documents. Suitable for cases 7630 and 7641.

Color: black.



### **PATENTED HEAVY DUTY BRASS PADLOCK WITH KEYS**

EXPL PADLOCK

Designed to fit snug to the Explorer case mould so as not to swing out



### **PATENTED COMBINATION PADLOCK**

EXPL COMBILOCK

Designed to fit snug to the Explorer case mould so as not to swing out





### BLIND INSERT

KIT.EXPL.PLUGS

Kit includes 6 pcs.

Whenever the slots are not going to be used for in-built applications, those can be closed by blind inserts that will give the case a better and finished interior look.



### TSA APPROVED PADLOCK WITH COMBINATION

EXPL TSA.DIGILOCK

The new TSA approved padlocks allow tsa® airport security agents to open the case without destroying the lock. TSA agents are trained to recognize the travel sentry certified logo and should not break the case lock.



### METAL BRACKET

KIT SUPP.EXPL.

Kit includes 6 pcs.

All models (except for the 1908) are internally equipped with specific slots, to apply the optional metal or plastic brackets which provide either a panel's fixing points or a fix mechanical joint inside the case, to build more complete applications. This way the case becomes a real workstation, rather than just a carrying container. As the panel mounting brackets are mechanically fixed by screws, they can be removed when necessary. The dedicated screws allow the case to remain waterproof, and help the panels to be removed easily and quickly



### CONVOLUTED FOAM SET FOR CASE 7630 AND 7641

LIDFOAM.76

(includes 2 pcs.)





### PLASTIC BRACKET

KIT SUPP.PLAST.

Kit includes 6 pcs.

All models (except for the 1908) are internally equipped with specific slots, to apply the optional metal or plastic brackets which provide either a panel's fixing points or a fix mechanical joint inside the case, to build more complete applications. This way the case becomes a real workstation, rather than just a carrying container. As the panel mounting brackets are mechanically fixed by screws, they can be removed when necessary. The dedicated screws allow the case to remain waterproof, and help the panels to be removed easily and quickly



### FOAM SET FOR CASE 7630

FOAM.7630

Layers of pre cubed foam for the bottom and convoluted foam for the lid. The pre-cubed foam allows the user to tailor the insert to their own individual requirement. The convoluted foam in the lid helps to firmly keep the stored equipment when the case is closed. Available for 7630 model. Color: dark grey. [DOWNLOAD PDF](#)

## SPARE PARTS

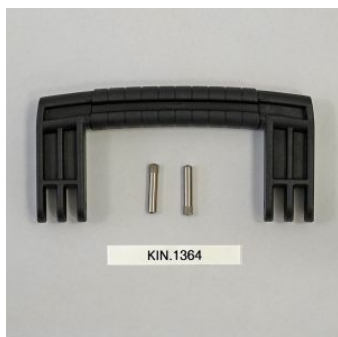


### Metal clips for mod.

**3005-4209-16-4412-19-4820-5140-5218-21-5325-26-5822-23-33-762  
6-30-35-41-7726-45-7814-9413-33-10826-40-11413-13513-27-15416**

KIN.1214

Includes: 4 metal reinforcements



### Side handle for mod.

**5822-5823-5833-7626-7630-7635-7641-7726-7745-13513-13527**

KIN.1364

Includes: 1 black handle 2 fixing pins



### Transparent PC name tag for mod.

**4209-4216-4412-4419-4820-5218-5221-5325-5326-5822-5823-5833-  
7626-7630-7635-7641-7726-7745-7814-9413-9433-10826-10840-114  
13-13513-13527-15416-MUB65**

KIN.0969

Includes: 1 transparent name tag holder



### Side handle for models

**5325-5326-5822-5823-5833-7630-7814-13513-13527-15416**

KIN.0412

Includes: 1 black handle 2 fixing pins



**Handle for mod.**

**7630-7726-7745-11413-13513-13527-15416-10826-10840-MUB78**

KIN.0425

Includes: 1 black handle 2 fixing pins



**Easy-opening latch for models from 3818 up**

KIN.0446

Includes:

1 black latch

1 fixing pin



**Wheels for models 5326-5823-5833-7630-7641-7726-7745**

KIN.0522

Includes: 2 self-oiling wheels 4 metal washers 2 snap rings (Seeger) 2 fixing pins



**Polyurethane o-ring seal for models 7630-7641**

KIN.0854

Includes: 1 o-ring



### **Extractable handle + wheels for models 7630-7641**

KIN.0837

Includes: 1 black extractable handle 1 black protective cover 1 metal spring 1 lock/unlock lever 1 small cover cap 4 fixing pins 4 metal washers 4 snap rings (Seeger) 2 self-oiling wheels 12 fixing screws



KIN.0415

### **Extractable handle for mod. 7630 (previous version) and MUB78**

KIN.0415

Includes: 1 black handle 2 fixing pins 2 torsion springs



KIN.0495

### **Manual pressure release valve for models from 2712 up (except mod. 3005)**

KIN.0495

Includes: 1 black purge valve (+ o-ring + pin) 1 threaded bush 1 snap ring (Seeger)