

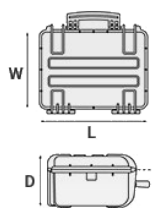
## Mod. 5833.B

### COPOLYMER POLYPROPYLENE WATERPROOF CASE

Water resistant trolley cases. Telescopic handle with quick and safe lock/unlock system and self oiling wheels. Available in black, orange and military green standard colors.



METRIC MM-KG-C°



#### INTERNAL DIMENSIONS

<b>L LENGTH</b>	580 mm
<b>W WIDTH</b>	440 mm
<b>D DEPTH</b>	330 mm
<b>LID</b>	60 mm
<b>BASE</b>	270 mm

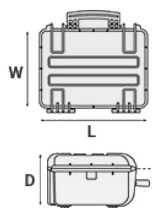
#### EXTERNAL DIMENSIONS

<b>L LENGTH</b>	670 mm
<b>W WIDTH</b>	510 mm
<b>D DEPTH</b>	372 mm

#### OTHER DATA

<b>WEIGHT EMPTY</b>	10.54 Kg
<b>WEIGHT WITH FOAM</b>	12.65 Kg
<b>WEIGHT WITH CUSTOM FOAM</b>	Kg
<b>VOLUME</b>	84.20 lt
<b>BUOYANCY</b>	62 Kg/max
<b>OPERATING TEMPERATURE</b>	°C min -33 / max +90

IMPERIAL IN-LBS-F°



#### INTERNAL DIMENSIONS

<b>L LENGTH</b>	22 13/16 in
<b>W WIDTH</b>	17 5/16 in
<b>D DEPTH</b>	13 in
<b>LID</b>	2 3/8 in
<b>BASE</b>	10 5/8 in

#### EXTERNAL DIMENSIONS

<b>L LENGTH</b>	26 3/8 in
<b>W WIDTH</b>	20 1/16 in
<b>D DEPTH</b>	14 5/8 in

#### OTHER DATA

<b>WEIGHT EMPTY</b>	23.23 lbs
<b>WEIGHT WITH FOAM</b>	27.88 lbs
<b>WEIGHT WITH CUSTOM FOAM</b>	lbs
<b>VOLUME</b>	22.19 gal
<b>BUOYANCY</b>	136.68 lbs/max
<b>OPERATING TEMPERATURE</b>	°F min -27.4 / max +194

## FEATURES



**SELF OILING FREE RUNNING WHEELS**



**WHEELS AND TELESCOPIC HANDLE (model 5833)**



**CORROSION PROOF METAL HINGES WITH LID STAY FEATURES**



**INTERNAL SLOTS**

Internal slots for optional panel mounting brackets or panel mounting rings



### JAM FREE LATCHES WITH EASY-OPENING MECHANISM

(from model 3818 on)



### SEALING O-RING

(Art. NEOSEAL + nr. art.)



### MANUAL PRESSURE RELEASE VALVE

The internal stop ring prevents valve from being completely extracted (Art. PURGEVALVE.B)



### PVC WATERPROOF I. D. REMOVABLE LABEL

(Art. LABELCOVER + nr. art.)

### SOFT GRIP RUBBER HANDLE

Load tested handle, reinforced with corrosion proof steel pins



### TWO MAN LIFT SIDE HANDLES



## ACCESSORIES



### PROTECTIVE SLEEVE FOR PC 15"-15.6"

TOP ENVELOPE 15

Protective padded notebook sleeve. Protects the laptop from shocks and scratches.



### PROTECTIVE SLEEVE FOR PC 13"-13.3"

TOP ENVELOPE 13

Protective padded notebook sleeve. Protects the laptop from shocks and scratches.



### PADDED GUN BAG FOR CASE 5833

GBAG 58

Padded gunbag to protect SMG guns. Inclusive of a number of features to secure rifles and shotguns together with necessary accessories and ammunitions. GBAG 58 is designed to perfectly fit into Explorer Cases model 5833 (up to 5 pieces). The gunbag is built with durable, 600D tear resistant polyester and robust zipper with lockable Velcro pull zipper. Designed to protect and transport critical gear. This gun bag comes with a removable shoulder strap. Personal ID window on the backside and front removable hook-and-loop screen-printable band.



### TOP COVER FOR DIV58-DIV58.1 AND DIV58.2

COV58

Top covers available for larger models: they can be easily fixed on the dividers by Velcro strips. Ideal to protect and keep items in place.

**PADDED DIVIDER FOR 5833**

DIV58-2

Padded dividers with internal adjustable partitions. Ideal to protect and transport any kind of sensitive equipment. Thanks to their modularity, they can be easily combined.

**PADDED DIVIDER FOR 5833**

DIV58-1

Padded dividers with internal adjustable partitions. Ideal to protect and transport any kind of sensitive equipment. Thanks to their modularity, they can be easily combined.

**PADDED DIVIDER FOR 5822-5823-5833**

DIV58

Padded dividers with internal adjustable partitions. Ideal to protect and transport any kind of sensitive equipment. Thanks to their modularity, they can be easily combined.

**PADDED BAG WITH ADJUSTABLE DIVIDERS**

BAG-G

Highly durable padded bag with rubber coated handle and waterproof zipper with lockable Velcro pull zipper. Practical external front pouch for documents, removable shoulder strap and rubber feet on the bottom to grant better grip. Internal adjustable padded dividers for flexible configuration. Ideal to protect sensitive equipment (ie electronic, photographic, broadcasting, medical etc.). Suitable for cases 5822, 5823 and 5833. Color: black/red.







### LID PANEL WITH ORGANIZED POUCHES

PANEXPL58

Practical and robust lid panel with pouches, ideal for small accessories and documents.  
Suitable for cases 5822, 5823 and 5833.

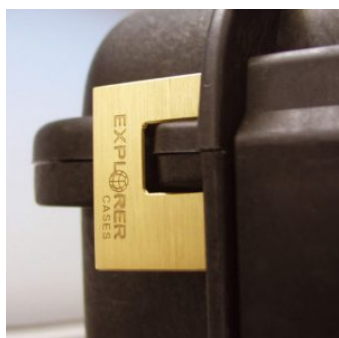
Color: black.



### CONVOLUTED FOAM SET FOR CASE 5822, 5823 AND 5833

LIDFOAM.58

(includes 2 pcs.)



### PATENTED HEAVY DUTY BRASS PADLOCK WITH KEYS

EXPL PADLOCK

Designed to fit snug to the Explorer case mould so as not to swing out



### PATENTED COMBINATION PADLOCK

EXPL COMBILOCK

Designed to fit snug to the Explorer case mould so as not to swing out



### BLIND INSERT

KIT.EXPL.PLUGS

Kit includes 6 pcs.

Whenever the slots are not going to be used for in-built applications, those can be closed by blind inserts that will give the case a better and finished interior look.



### TSA APPROVED PADLOCK WITH COMBINATION

EXPL TSA.DIGILOCK

The new TSA approved padlocks allow tsa® airport security agents to open the case without destroying the lock. TSA agents are trained to recognize the travel sentry certified logo and should not break the case lock.



### METAL BRACKET

KIT SUPP.EXPL.

Kit includes 6 pcs.

All models (except for the 1908) are internally equipped with specific slots, to apply the optional metal or plastic brackets which provide either a panel's fixing points or a fix mechanical joint inside the case, to build more complete applications. This way the case becomes a real workstation, rather than just a carrying container. As the panel mounting brackets are mechanically fixed by screws, they can be removed when necessary. The dedicated screws allow the case to remain waterproof, and help the panels to be removed easily and quickly



### PLASTIC BRACKET

KIT SUPP.PLAST.

Kit includes 6 pcs.

All models (except for the 1908) are internally equipped with specific slots, to apply the optional metal or plastic brackets which provide either a panel's fixing points or a fix mechanical joint inside the case, to build more complete applications. This way the case becomes a real workstation, rather than just a carrying container. As the panel mounting brackets are mechanically fixed by screws, they can be removed when necessary. The dedicated screws allow the case to remain waterproof, and help the panels to be removed easily and quickly





### FOAM SET FOR CASE 5833

FOAM.5833

Layers of pre cubed foam for the bottom and convoluted foam for the lid. The pre-cubed foam allows the user to tailor the insert to their own individual requirement. The convoluted foam in the lid helps to firmly keep the stored equipment when the case is closed. Available for 5833 model. Color: dark grey. [DOWNLOAD PDF](#)

## SPARE PARTS



**Metal clips for mod.**

**3005-4209-16-4412-19-4820-5140-5218-21-5325-26-5822-23-33-762  
6-30-35-41-7726-45-7814-9413-33-10826-40-11413-13513-27-15416**

KIN.1214

Includes: 4 metal reinforcements



**Side handle for mod.**

**5822-5823-5833-7626-7630-7635-7641-7726-7745-13513-13527**

KIN.1370

Includes: 1 orange handle 2 fixing pins



**Side handle for mod.**

**5822-5823-5833-7626-7630-7635-7641-7726-7745-13513-13527**

KIN.1368

Includes: 1 military green handle 2 fixing pins



**Side handle for mod.**

**5822-5823-5833-7626-7630-7635-7641-7726-7745-13513-13527**

KIN.1366

Includes: 1 desert tan handle 2 fixing pins



**Side handle for mod.**

**5822-5823-5833-7626-7630-7635-7641-7726-7745-13513-13527**

KIN.1364

Includes: 1 black handle 2 fixing pins



**Transparent PC name tag for mod.**

**4209-4216-4412-4419-4820-5218-5221-5325-5326-5822-5823-5833-7626-7630-7635-7641-7726-7745-7814-9413-9433-10826-10840-11413-13513-13527-15416-MUB65**

KIN.0969

Includes: 1 transparent name tag holder



**Side handle for models**

**5325-5326-5822-5823-5833-7630-7814-13513-13527-15416**

KIN.0426

Includes: 1 orange handle 2 fixing pins



**Side handle for models**

**5325-5326-5822-5823-5833-7630-7814-13513-13527-15416**

KIN.0880

Includes: 1 sand handle 2 fixing pins



**Side handle for models**

**5325-5326-5822-5823-5833-7630-7814-13513-13527-15416**

KIN.0412

Includes: 1 black handle 2 fixing pins



**Rubber coated handle for models 4820-5325-5326-5822-5823-5833**

KIN.0540

Includes: 1 orange handle 2 fixing pins



**Rubber coated handle for models 4820-5325-5326-5822-5823-5833**

KIN.0542

Includes: 1 black handle 2 fixing pins



**Easy-opening latch for models from 3818 up**

KIN.0446

Includes:  
1 black latch  
1 fixing pin



**Easy-opening latch for models from 3818 up**

KIN.0435

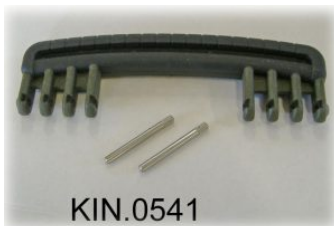
Includes:  
1 military green latch  
1 fixing pin



**Easy-opening latch for models from 3818 up**

KIN.0434

Includes:  
1 orange latch  
1 fixing pin



**Rubber coated handle for models 4820-5325-5326-5822-5823-5833**

KIN.0541

Includes: 1 military green handle 2 fixing pins



**Wheels for models 5326-5823-5833-7630-7641-7726-7745**

KIN.0522

Includes: 2 self-oiling wheels 4 metal washers 2 snap rings (Seeger) 2 fixing pins



**Side handle for models**

**5325-5326-5822-5823-5833-7630-7814-13513-13527-15416**

KIN.0448

Includes: 1 military green handle 2 fixing pins



**Extractable handle + wheels for models 5822-5823-5833**

KIN.0550

Includes: 1 black extractable handle 1 black protective cover 1 metal spring 1 lock/unlock lever 1 small cover cap 4 fixing pins 4 metal washers 4 snap rings (Seeger) 2 self-oiling wheels 12 fixing screws



**Polyurethane o-ring seal for models 5822-5823-5833**

KIN.0853

Includes: 1 o-ring



**Easy-opening latch for models from 3818 up**

KIN.0883

Includes:  
1 sand latch  
1 fixing pin





**Manual pressure release valve for models from 2712 up (except mod. 3005)**

KIN.0495

Includes: 1 black purge valve (+ o-ring + pin) 1 threaded bush 1 snap ring (Seeger)