

## Mod. 5325.B E

### COPOLYMER POLYPROPYLENE WATERPROOF CASE

IP67 waterproof, dustproof cases. Side handles and soft grip rubber handle. Lid can be set to slide-off. Stainless steel reinforced padlockable points.



METRIC MM-KG-C°



#### INTERNAL DIMENSIONS

|                 |        |
|-----------------|--------|
| <b>L LENGTH</b> | 538 mm |
| <b>W WIDTH</b>  | 405 mm |
| <b>D DEPTH</b>  | 250 mm |
| <b>LID</b>      | 60 mm  |
| <b>BASE</b>     | 190 mm |

#### EXTERNAL DIMENSIONS

|                 |        |
|-----------------|--------|
| <b>L LENGTH</b> | 607 mm |
| <b>W WIDTH</b>  | 475 mm |
| <b>D DEPTH</b>  | 275 mm |

#### OTHER DATA

|                                |                      |
|--------------------------------|----------------------|
| <b>WEIGHT EMPTY</b>            | 7 Kg                 |
| <b>WEIGHT WITH FOAM</b>        | 8.25 Kg              |
| <b>WEIGHT WITH CUSTOM FOAM</b> | Kg                   |
| <b>FOAM VOLUME</b>             | 53 lt                |
| <b>BUOYANCY</b>                | 37.20 Kg/max         |
| <b>OPERATING TEMPERATURE</b>   | °C min -33 / max +90 |

IMPERIAL IN-LBS-F°



#### INTERNAL DIMENSIONS

|                 |             |
|-----------------|-------------|
| <b>L LENGTH</b> | 21 3/16 in  |
| <b>W WIDTH</b>  | 15 15/16 in |
| <b>D DEPTH</b>  | 9 13/16 in  |
| <b>LID</b>      | 2 3/8 in    |
| <b>BASE</b>     | 7 1/2 in    |

#### EXTERNAL DIMENSIONS

|                 |             |
|-----------------|-------------|
| <b>L LENGTH</b> | 23 7/8 in   |
| <b>W WIDTH</b>  | 18 11/16 in |
| <b>D DEPTH</b>  | 10 13/16 in |

#### OTHER DATA

|                                |                         |
|--------------------------------|-------------------------|
| <b>WEIGHT EMPTY</b>            | 15.43 lbs               |
| <b>WEIGHT WITH FOAM</b>        | 18.18 lbs               |
| <b>WEIGHT WITH CUSTOM FOAM</b> | lbs                     |
| <b>FOAM VOLUME</b>             | 14 gal                  |
| <b>BUOYANCY</b>                | 82.01 lbs/max           |
| <b>OPERATING TEMPERATURE</b>   | °F min -27.4 / max +194 |

## FEATURES



**CORROSION PROOF METAL HINGES WITH LID STAY FEATURES**



### **INTERNAL SLOTS**

Internal slots for optional panel mounting brackets or panel mounting rings



### **JAM FREE LATCHES WITH EASY-OPENING MECHANISM**

(from model 3818 on)



### **SEALING O-RING**

(Art. NEOSEAL + nr. art.)



### MANUAL PRESSURE RELEASE VALVE

The internal stop ring prevents valve from being completely extracted (Art. PURGEVALVE.B)



### PVC WATERPROOF I. D. REMOVABLE LABEL

(Art. LABELCOVER + nr. art.)



### LID CAN BE SET TO SLIDE-OFF

By releasing the back screw, lid becomes set to slide-off when opened at 70°



### SOFT GRIP RUBBER HANDLE

Load tested handle, reinforced with corrosion proof steel pins

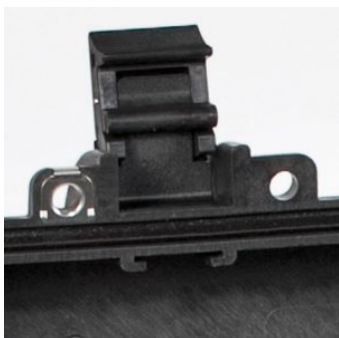


#### **TWO MAN LIFT SIDE HANDLES**



#### **STAINLESS STEEL REINFORCED PADLOCKABLE POINTS WITH CLIPS**

4 stainless steel clip-covers on the two frontal outer padlock points, to grant a better resistance to abrasion.



#### **FIXING POINTS (5325-5326)**

Additional fixing points on the lid.

## ACCESSORIES



### PROTECTIVE SLEEVE FOR PC 15"-15.6"

TOP ENVELOPE 15

Protective padded notebook sleeve. Protects the laptop from shocks and scratches.



### PROTECTIVE SLEEVE FOR PC 13"-13.3"

TOP ENVELOPE 13

Protective padded notebook sleeve. Protects the laptop from shocks and scratches.



### TOP COVER FOR DIV53

COV53

Top covers available for larger models: they can be easily fixed on the dividers by Velcro strips. Ideal to protect and keep items in place.



### PADDED DIVIDER FOR 5325-5326

DIV53

Padded dividers with internal adjustable partitions. Ideal to protect and transport any kind of sensitive equipment. Thanks to their modularity, they can be easily combined.



### PADDED BAG WITH ADJUSTABLE DIVIDERS

BAG-V

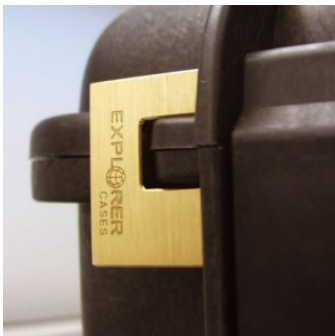
Highly durable padded bag with rubber coated handle and waterproof zipper with lockable Velcro pull zipper. Practical external front pouch for documents, removable shoulder strap and rubber feet on the bottom to grant better grip. Internal adjustable padded dividers for flexible configuration. Ideal to protect sensitive equipment (ie electronic, photographic, broadcasting, medical etc.). Suitable for cases 5325-5326. Color: black/red.



### LID PANEL WITH ORGANIZED POUCHES

PANEXPL53

Practical and robust lid panel with pouches, ideal for small accessories and documents. Suitable for cases 5325 and 5326. Color: black.



### PATENTED HEAVY DUTY BRASS PADLOCK WITH KEYS

EXPL PADLOCK

Designed to fit snug to the Explorer case mould so as not to swing out



### PATENTED COMBINATION PADLOCK

EXPL COMBILOCK

Designed to fit snug to the Explorer case mould so as not to swing out





### BLIND INSERT

KIT.EXPL.PLUGS

Kit includes 6 pcs.

Whenever the slots are not going to be used for in-built applications, those can be closed by blind inserts that will give the case a better and finished interior look.



### TSA APPROVED PADLOCK WITH COMBINATION

EXPL TSA.DIGILOCK

The new TSA approved padlocks allow tsa® airport security agents to open the case without destroying the lock. TSA agents are trained to recognize the travel sentry certified logo and should not break the case lock.



### METAL BRACKET

KIT SUPP.EXPL.

Kit includes 6 pcs.

All models (except for the 1908) are internally equipped with specific slots, to apply the optional metal or plastic brackets which provide either a panel's fixing points or a fix mechanical joint inside the case, to build more complete applications. This way the case becomes a real workstation, rather than just a carrying container. As the panel mounting brackets are mechanically fixed by screws, they can be removed when necessary. The dedicated screws allow the case to remain waterproof, and help the panels to be removed easily and quickly



### PLASTIC BRACKET

KIT SUPP.PLAST.

Kit includes 6 pcs.

All models (except for the 1908) are internally equipped with specific slots, to apply the optional metal or plastic brackets which provide either a panel's fixing points or a fix mechanical joint inside the case, to build more complete applications. This way the case becomes a real workstation, rather than just a carrying container. As the panel mounting brackets are mechanically fixed by screws, they can be removed when necessary. The dedicated screws allow the case to remain waterproof, and help the panels to be removed easily and quickly



### FOAM SET FOR CASE 5325 AND 5326

FOAM.5325

Layers of pre cubed foam for the bottom and convoluted foam for the lid. The pre-cubed foam allows the user to tailor the insert to their own individual requirement. The convoluted foam in the lid helps to firmly keep the stored equipment when the case is closed. Available for models 5325 and 5326. Color: dark grey. [DOWNLOAD PDF](#)



### CONVOLUTED FOAM SET FOR CASE 5325 AND 5326

LIDFOAM.53

(includes 2 pcs.)



## SPARE PARTS



### Metal clips for mod.

**3005-4209-16-4412-19-4820-5140-5218-21-5325-26-5822-23-33-762  
6-30-35-41-7726-45-7814-9413-33-10826-40-11413-13513-27-15416**

KIN.1214

Includes: 4 metal reinforcements



KIN.0969

### Transparent PC name tag for mod.

**4209-4216-4412-4419-4820-5218-5221-5325-5326-5822-5823-5833-  
7626-7630-7635-7641-7726-7745-7814-9413-9433-10826-10840-114  
13-13513-13527-15416-MUB65**

KIN.0969

Includes: 1 transparent name tag holder



### Side handle for models

**5325-5326-5822-5823-5833-7630-7814-13513-13527-15416**

KIN.0426

Includes: 1 orange handle 2 fixing pins



### Side handle for models

**5325-5326-5822-5823-5833-7630-7814-13513-13527-15416**

KIN.0880

Includes: 1 sand handle 2 fixing pins



**Side handle for models**

**5325-5326-5822-5823-5833-7630-7814-13513-13527-15416**

KIN.0412

Includes: 1 black handle 2 fixing pins



**Rubber coated handle for models 4820-5325-5326-5822-5823-5833**

KIN.0540

Includes: 1 orange handle 2 fixing pins



**Rubber coated handle for models 4820-5325-5326-5822-5823-5833**

KIN.0542

Includes: 1 black handle 2 fixing pins



**Polyurethane o-ring seal for models 5325-5326**

KIN.0925

Includes: 1 o-ring



### Extractable handle + wheels for models 5325-5326

KIN.0930

Includes: 1 black extractable handle 1 black protective cover 2 self-oiling wheels 1 metal spring 1 lock/unlock lever 1 small cover cap 4 fixing pins 2 supporting feet for wheels 4 supporting feet for the bottom 4 snap rings (Seeger) 12 fixing screws



KIN.0446

### Easy-opening latch for models from 3818 up

KIN.0446

Includes:  
1 black latch  
1 fixing pin



KIN.0435

### Easy-opening latch for models from 3818 up

KIN.0435

Includes:  
1 military green latch  
1 fixing pin

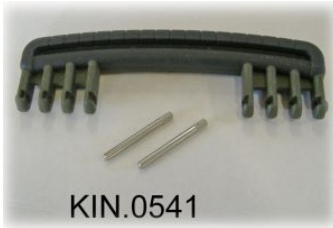


KIN.0434

### Easy-opening latch for models from 3818 up

KIN.0434

Includes:  
1 orange latch  
1 fixing pin



**Rubber coated handle for models 4820-5325-5326-5822-5823-5833**

KIN.0541

Includes: 1 military green handle 2 fixing pins



**Side handle for models**

**5325-5326-5822-5823-5833-7630-7814-13513-13527-15416**

KIN.0448

Includes: 1 military green handle 2 fixing pins



**Easy-opening latch for models from 3818 up**

KIN.0883

Includes:

1 sand latch

1 fixing pin



**Manual pressure release valve for models from 2712 up (except mod. 3005)**

KIN.0495

Includes: 1 black purge valve (+ o-ring + pin) 1 threaded bush 1 snap ring (Seeger)

