

Mod. 5140.B.6U**WATERPROOF RACK MOUNT CASE**

6U rack-size waterproof case.

Units can fit horizontally in the front side of the case, or vertically from the top of the case.

Practical lightweight and economical solutions to carry small rack devices up to 6U (units).

This case can be used in horizontal mode up to 6U or in vertical mode up to 5U.

The internal hardware can easily be reconfigured for either ones of the two versions.

Handles on both side and wheels plus trolley handle in the rear allow for a practical carrying of this case.

The provided M6 Cage Nuts and screws grants practical mounting of any device.

HORIZONTAL USE

RACK DEPTH: 265 mm (245 mm if backward positioning)

FRONT LID DEPTH: 20 mm (40 mm if backward positioning)

VERTICAL USE

RACK DEPTH: 325 mm (385 mm if forward positioning)

UPPER LID DEPTH: 75 mm (15 mm if forward positioning)

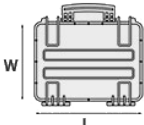

HORIZONTAL USE



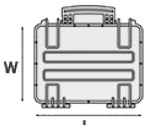

VERTICAL USE



METRIC MM-KG-C°

	INTERNAL DIMENSIONS		EXTERNAL DIMENSIONS		OTHER DATA	
	L LENGTH	mm	L LENGTH	581 mm	WEIGHT EMPTY	9.2 Kg
	W WIDTH	mm	W WIDTH	381 mm	WEIGHT WITH FOAM	Kg
	D DEPTH	mm	D DEPTH	455 mm	WEIGHT WITH CUSTOM FOAM	Kg
	LID	mm			VOLUME	lt
	BASE	mm			BUOYANCY	Kg/max
					OPERATING TEMPERATURE	°C min -33 / max 90

IMPERIAL IN-LBS-F°

	INTERNAL DIMENSIONS		EXTERNAL DIMENSIONS		OTHER DATA	
	L LENGTH	in	L LENGTH	22 7/8 in	WEIGHT EMPTY	20.28 lbs
	W WIDTH	in	W WIDTH	15 in	WEIGHT WITH FOAM	lbs
	D DEPTH	in	D DEPTH	17 15/16 in	WEIGHT WITH CUSTOM FOAM	lbs
	LID	in			VOLUME	gal
	BASE	in			BUOYANCY	lbs/max
					OPERATING TEMPERATURE	°F min -27.4 / max 194

FEATURES



REINFORCED PADLOCKABLE POINTS

Stainless steel clip-covers, to grant a better resistance to abrasion.



SELF OILING FREE RUNNING WHEELS



CORROSION PROOF METAL HINGES WITH LID STAY FEATURES



SEALING O-RING

(Art. NEOSEAL + nr. art.)



PVC WATERPROOF I. D. REMOVABLE LABEL

(Art. LABELCOVER + nr. art.)



LID CAN BE SET TO SLIDE-OFF

By releasing the back screw, lid becomes set to slide-off when opened at 70°



ABILITY TO STACK

The special design of the bottom and the lid feet, grants a perfect stackability.



FRONT LID O-RING

Both the top and front lids are equipped with a polyurethane sealing o-rings, that make the case to be completely waterproof.



SIDE HANDLES

Two side handles allow an easy transportation.



REMOVABLE TOP LID

By releasing the screw both, the top and front lids can be slide off.



REMOVABLE FRONT LID

By releasing the screw both, the top and front lids can be slide off.

ACCESSORIES



AIPANEL PLEXI

AIPANEL PLEXI

Transparent panel for 5140 upper lid.



PROTECTIVE SLEEVE FOR PC 15"-15.6"

TOP ENVELOPE 15

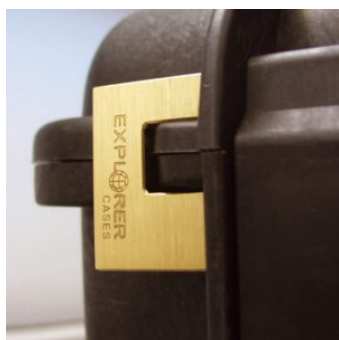
Protective padded notebook sleeve. Protects the laptop from shocks and scratches.



PROTECTIVE SLEEVE FOR PC 13"-13.3"

TOP ENVELOPE 13

Protective padded notebook sleeve. Protects the laptop from shocks and scratches.



PATENTED HEAVY DUTY BRASS PADLOCK WITH KEYS

EXPL PADLOCK

Designed to fit snug to the Explorer case mould so as not to swing out



PATENTED COMBINATION PADLOCK

EXPL COMBILOCK

Designed to fit snug to the Explorer case mould so as not to swing out



BLIND INSERT

KIT.EXPL.PLUGS

Kit includes 6 pcs.

Whenever the slots are not going to be used for in-built applications, those can be closed by blind inserts that will give the case a better and finished interior look.



TSA APPROVED PADLOCK WITH COMBINATION

EXPL TSA.DIGILOCK

The new TSA approved padlocks allow tsa® airport security agents to open the case without destroying the lock. TSA agents are trained to recognize the travel sentry certified logo and should not break the case lock.



METAL BRACKET

KIT SUPP.EXPL.

Kit includes 6 pcs.

All models (except for the 1908) are internally equipped with specific slots, to apply the optional metal or plastic brackets which provide either a panel's fixing points or a fix mechanical joint inside the case, to build more complete applications. This way the case becomes a real workstation, rather than just a carrying container. As the panel mounting brackets are mechanically fixed by screws, they can be removed when necessary. The dedicated screws allow the case to remain waterproof, and help the panels to be removed easily and quickly



PLASTIC BRACKET

KIT SUPP.PLAST.

Kit includes 6 pcs.

All models (except for the 1908) are internally equipped with specific slots, to apply the optional metal or plastic brackets which provide either a panel's fixing points or a fix mechanical joint inside the case, to build more complete applications. This way the case becomes a real workstation, rather than just a carrying container. As the panel mounting brackets are mechanically fixed by screws, they can be removed when necessary. The dedicated screws allow the case to remain waterproof, and help the panels to be removed easily and quickly

SPARE PARTS



Fixed divider for upper compartment – mod. 5140

KIN.1093

Includes: 1 plastic divider 6 screws



Metal clips for mod.

3005-4209-16-4412-19-4820-5140-5218-21-5325-26-5822-23-33-762-6-30-35-41-7726-45-7814-9413-33-10826-40-11413-13513-27-15416

KIN.1214

Includes: 4 metal reinforcements



Polyurethane o-ring seal for model 5140 - front lid

KIN.1166

Includes: 1 o-ring



Vertical sliding frontal latch for model 5140 - green slide

KIN.1077

Includes: 1 black latch 2 fixing pins



Curved side latch for model 5140

KIN.1051

Includes: 1 black latch 1 fixing pin



Extractable handle for mod. 5140 (new version)

KIN.1306

Includes: 1 black extractable handle 1 black protective cover 15 screws



Side handle for models 5140 (new version) and 9433

KIN.1197

Includes: 1 black handle 2 fixing pins



Polyurethane o-ring seal for model 5140 - top lid

KIN.1165

Includes: 1 o-ring



Feet for model 5140

KIN.1032

Includes: 2 black feet 2 screws



Wheels for model 5140

KIN.1031

Includes: 2 self-oiling wheels 1 metal washer 1 snap ring (Seeger) 1 fixing pin



Upper removable tray for mod. 5140

KIN.1019

Includes: 1 plastic tray



Easy-opening latch for models from 3818 up

KIN.0446

Includes:

1 black latch

1 fixing pin



Name tag holder for models 1908-1913-2209-2214-3005-5140

KIN.0497

Includes: 1 transparent PP name tag holder



Manual pressure release valve for models from 2712 up (except mod. 3005)

KIN.0495

Includes: 1 black purge valve (+ o-ring + pin) 1 threaded bush 1 snap ring (Seeger)