

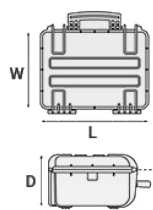
Mod. 15416.B

COPOLYMER POLYPROPYLENE WATERPROOF CASE

The longest rifle cases on the market. Suitable to accommodate the most used long range rifles and accessories. Wider latches with safe button. Double automatic purge valves. Self-oiling free running wheels.



METRIC MM-KG-C°



INTERNAL DIMENSIONS

L LENGTH	1540 mm
W WIDTH	377 mm
D DEPTH	160 mm
LID	42 mm
BASE	118 mm

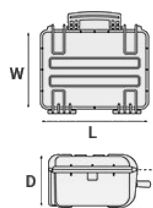
EXTERNAL DIMENSIONS

L LENGTH	1629 mm
W WIDTH	456 mm
D DEPTH	183 mm

OTHER DATA

WEIGHT EMPTY	11.30 Kg
WEIGHT WITH FOAM	13.40 Kg
WEIGHT WITH CUSTOM FOAM	Kg
VOLUME	93 lt
BUOYANCY	61.60 Kg/max
OPERATING TEMPERATURE	°C min -33 / max +90

IMPERIAL IN-LBS-F°



INTERNAL DIMENSIONS

L LENGTH	60 5/8 in
W WIDTH	14 13/16 in
D DEPTH	6 5/16 in
LID	1 5/8 in
BASE	4 5/8 in

EXTERNAL DIMENSIONS

L LENGTH	64 1/8 in
W WIDTH	17 15/16 in
D DEPTH	7 3/16 in

OTHER DATA

WEIGHT EMPTY	24.91 lbs
WEIGHT WITH FOAM	29.54 lbs
WEIGHT WITH CUSTOM FOAM	lbs
VOLUME	24.54 gal
BUOYANCY	135.80 lbs/max
OPERATING TEMPERATURE	°F min -27.4 / max

FEATURES



AUTOMATIC VALVE

Automatic pressure release valve.



SELF OILING FREE RUNNING WHEELS



CORROSION PROOF METAL HINGES WITH LID STAY FEATURES



INTERNAL SLOTS

Internal slots for optional panel mounting brackets or panel mounting rings

LARGE FRONT HANDLE



JAM FREE LATCHES WITH EASY-OPENING MECHANISM

(from model 3818 on)



SEALING O-RING

(Art. NEOSEAL + nr. art.)



PVC WATERPROOF I. D. REMOVABLE LABEL

(Art. LABELCOVER + nr. art.)





TWO MAN LIFT SIDE HANDLES

ACCESSORIES



PADDED GUN BAG FOR CASE 15416

GBAG 154

Padded gunbag to protect long guns or sniper rifles. Inclusive of a number of features to secure rifles and shotguns together with necessary accessories and ammunitions. GBAG 154 is designed to perfectly fit into Explorer Cases model 15416. The gunbag is built with durable, 600D tear resistant polyester and robust zipper with lockable Velcro pull zipper for the main compartment. The main compartment features two neoprene hook-and-loop side flaps and adjustable straps to secure firearms. The front central compartment is equipped with adjustable interior straps to secure rifle position. The two side smaller pouches are designed to storage accessories and ammunitions. Both the main and front compartments are padded on all sides to protect and transport critical gear. This long gun bag features top and bottom compression straps and come with a removable shoulder strap. Personal ID window on the backside and front removable hook-and-loop screen-printable band. **Full-opening zipper for shooting mat configuration.** The gunbag can easily become a backpack by fixing the BACKPACK KIT in its rear side (see BACKPACK KIT accessory in BACKPACK SYSTEMS section for more details).



PROTECTIVE SLEEVE FOR PC 15"-15.6"

TOP ENVELOPE 15

Protective padded notebook sleeve. Protects the laptop from shocks and scratches.



PROTECTIVE SLEEVE FOR PC 13"-13.3"

TOP ENVELOPE 13

Protective padded notebook sleeve. Protects the laptop from shocks and scratches.



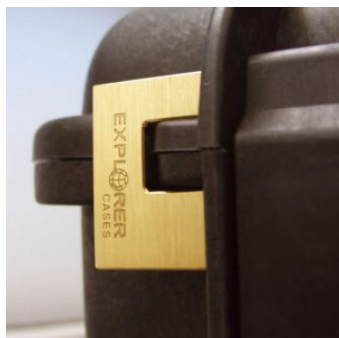
FOAM SET FOR CASE 15416

FOAM.15416

Layers of pre cubed foam for the bottom and convoluted foam for the lid. The pre-cubed foam allows the user to tailor the insert to their own individual requirement. The convoluted foam in the lid helps to firmly keep the stored equipment when the case is closed. Available for 15416 model. Color: dark grey. [DOWNLOAD PDF](#)

CONVOLUTED FOAM SET FOR CASE 15416

LIDFOAM.154
(includes 2 pcs.)



PATENTED HEAVY DUTY BRASS PADLOCK WITH KEYS

EXPL PADLOCK

Designed to fit snug to the Explorer case mould so as not to swing out



DIGITAL LOCK FOR CASES 9413, 9433, 11413, 13513, 13527, 15416, 10826 AND 10840

KIT.DL

Kit includes 2 pcs.



PATENTED COMBINATION PADLOCK

EXPL COMBILOCK

Designed to fit snug to the Explorer case mould so as not to swing out



BLIND INSERT

KIT.EXPL.PLUGS

Kit includes 6 pcs.

Whenever the slots are not going to be used for in-built applications, those can be closed by blind inserts that will give the case a better and finished interior look.



TSA APPROVED PADLOCK WITH COMBINATION

EXPL TSA.DIGILOCK

The new TSA approved padlocks allow tsa® airport security agents to open the case without destroying the lock. TSA agents are trained to recognize the travel sentry certified logo and should not break the case lock.



METAL BRACKET

KIT SUPP.EXPL.

Kit includes 6 pcs.

All models (except for the 1908) are internally equipped with specific slots, to apply the optional metal or plastic brackets which provide either a panel's fixing points or a fix mechanical joint inside the case, to build more complete applications. This way the case becomes a real workstation, rather than just a carrying container. As the panel mounting brackets are mechanically fixed by screws, they can be removed when necessary. The dedicated screws allow the case to remain waterproof, and help the panels to be removed easily and quickly



PLASTIC BRACKET

KIT SUPP.PLAST.

Kit includes 6 pcs.

All models (except for the 1908) are internally equipped with specific slots, to apply the optional metal or plastic brackets which provide either a panel's fixing points or a fix mechanical joint inside the case, to build more complete applications. This way the case becomes a real workstation, rather than just a carrying container. As the panel mounting brackets are mechanically fixed by screws, they can be removed when necessary. The dedicated screws allow the case to remain waterproof, and help the panels to be removed easily and quickly

SPARE PARTS



Metal clips for mod.

3005-4209-16-4412-19-4820-5140-5218-21-5325-26-5822-23-33-762

6-30-35-41-7726-45-7814-9413-33-10826-40-11413-13513-27-15416

KIN.1214

Includes: 4 metal reinforcements



Wheels for model 15416

KIN.1120

Includes: 2 self-oiling wheels 2 metal washers 2 snap rings (Seeger) 2 fixing pins



Polyurethane o-ring seal for model 15416

KIN.1119

Includes: 1 o-ring



Grey trigger pull release latch for model 15416

KIN.1284

Includes: 1 black latch 1 fixing pin



KIN.0969

Transparent PC name tag for mod.

4209-4216-4412-4419-4820-5218-5221-5325-5326-5822-5823-5833-7626-7630-7635-7641-7726-7745-7814-9413-9433-10826-10840-11413-13513-13527-15416-MUB65

KIN.0969

Includes: 1 transparent name tag holder



KIN.0426

Side handle for models

5325-5326-5822-5823-5833-7630-7814-13513-13527-15416

KIN.0426

Includes: 1 orange handle 2 fixing pins



KIN.0880

Side handle for models

5325-5326-5822-5823-5833-7630-7814-13513-13527-15416

KIN.0880

Includes: 1 sand handle 2 fixing pins



KIN.0412

Side handle for models

5325-5326-5822-5823-5833-7630-7814-13513-13527-15416

KIN.0412

Includes: 1 black handle 2 fixing pins



Handle for mod.

7630-7726-7745-11413-13513-13527-15416-10826-10840-MUB78

KIN.0425

Includes: 1 black handle 2 fixing pins



Handle for mod.

7630-7726-7745-11413-13513-13527-15416-10826-10840-MUB78

KIN.0881

Includes: 1 sand handle 2 fixing pins



Side handle for models

5325-5326-5822-5823-5833-7630-7814-13513-13527-15416

KIN.0448

Includes: 1 military green handle 2 fixing pins



Handle for models

7630-7726-7745-11413-13513-13527-10826-10840-15416-MUB78

KIN.0424

Includes: 1 military green handle 2 fixing pins



Handle for models

7630-7726-7745-11413-13513-13527-10826-10840-15416-MUB78

KIN.0423

Includes: 1 orange handle 2 fixing pins